

## *Quick User Guide*

# DB4000

## FM Radio Monitoring Receiver

### → **BEFORE YOU USE THIS PRODUCT** ←

In order to be able to enjoy all the benefits of owning your new DEVA product, please verify first that the latest software and firmware release were installed.

Visit [www.devabroadcast.com/downloads](http://www.devabroadcast.com/downloads) for the most recent software and firmware downloads, prior the installation.

This Quick user guide will make the installation of DB4000 - FM Radio Monitoring Receiver quick and easy. Applying these principles, you can simplify the process and save yourself extra time and effort. **For more information about the Safety precautions and the Operating environment recommendations please refer to the User Manual.**

## STEP 1

### Connection

1. Install the unit on its operation place;
2. Before connecting the device to the power supply, make sure that the internal selector is in accordance with the mains supply at your location. DB4000 Power Supply Factory Settings are 115-230V, 50-60Hz AC mains ;
3. Connect the antenna cable to the RF antenna input connector located on the rear panel of the device;
4. Connect DB4000 to the TCP/IP network using a direct network cable.

## STEP 2

### PC Configuration

In order to establish connection with DB4000 you have to install “**DB4000 Device Manager**” Software. Connect your PC to Internet or to the Local network. The network must be properly configured to allow access to the device via TCP/IP.

**NOTE:** To register the device in the software you need to know its Serial Number, IP Address of the device and both Data and Status Port.

## STEP 3

### DB4000 Identification

Each device has a factory assigned Serial number. This number can be found on the rear panel of the device.

The Serial number of DB4000 could also be verified using the front panel menu:

1. Press "OK" to enter the device Menu;
2. Using the DOWN button find the **6. Other settings** menu and press "OK" to enter it;
3. Using the DOWN button find the **6.8 Serial and MAC** menu and press "OK" to enter it.

If all steps are performed correctly, the screen containing information about the Serial number and the MAC Address will appear.

```
91.10 ST RDS 16:16 5. GSM MODEM ^
>6. OTHER SETTINGS v
```

```
OTHER SETTINGS >6.1 TIME SETTINGS
6.2 RDS STANDARD :RDSv
```

```
OTHER SETTINGS 6.7 MEMORY SPACE ^
>6.8 SERIAL AND MAC v
```

```
Serial Number:12B50A11 Press
MAC Address : 00-04-A3-00-12-11 Button
```

## STEP 4

### IP Address Identification

1. Connect the device to the local network or to the Internet by LAN cable;
2. Using the Front panel navigational menu press "OK" button to enter the device Menu;
3. Using the navigational buttons find the **3.Network Configuration** menu;
4. Press the "OK" Button to enter the selected section. A screen containing information about the IP Address of the device and the GATEWAY will appear;

```
91.10 ST RDS 16:16 2. LOGGER SETTINGS ^
>3. NETWORK CONFIG v
```

```
NETWORK >3.1 IP :192.168.020.070
3.2 GATEWAY :192.168.020.001 v
```

```
NETWORK >3.5 DHCP :Enabled ^
3.6 TCP CON. PORT:2200 v
```

```
NETWORK >3.9 HTTP PORT :2204 ^
3.10 STATUS PORT :2201 v
```

5. Using the DOWN button, find **3.6 TCP Con. Port** sub-menu. This is the **Data port** used by the device;
6. Using the DOWN button, find **3.10 Status Port** sub-menu.

**STEP 5****Network Settings**

Depending on the TCP/IP network properties there are two options for Network assigning.

**STEP 5.1****Configuring using DHCP Server**

Enable the DHCP client following steps 1 to 4 from *Option 1*. If your network uses DHCP server for assigning an IP Address, such will be assigned automatically to DB4000.

**IMPORTANT:** Make sure that your network DHCP server supports 'automatic allocation' or 'static allocation' methods (Static DHCP Assignment) before using the DHCP client.

When these modes are activated, the DHCP server supports a record of past IP address assignments (bounded to DB4000's MAC address - refer to **Step 3**), so that it can preferentially assign to the device the same IP address that the client previously had. Please, if you are not familiar with the matter, consult with your network administrator about the appropriate settings and for further assistance.

**STEP 5.2****Configuring using Static IP Address**

In order to receive all required settings, please refer to your network administrator. If you do not have one all settings can be obtained automatically by using the internal DHCP client (refer to **Step 5, Option 2**).

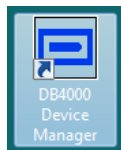
- Using the Front panel navigational menu press "OK" button to enter the device Menu;
- Using the navigational buttons find the **3.Network Configuration** menu and press the "OK" button;
- Find the **3.5 DHCP** sub-menu. Press the *RIGHT* navigational button to enter this option;
- Disable the DHCP using the *UP* and *DOWN* navigational buttons and press LEFT to exit;
- Enter the IP Address manually (**3.1 IP** sub-menu);
- Save the changes - enter **3.12 Back** sub-menu, press the LEFT button to select "Save and quit", then press "OK".

```

91.10 ST RDS 16:16      2.  LOGGERS SETTINGS
                        >3.  NETWORK CONFIG
NETWORK >3.5  DHCP      :Enabled
                        3.6  TCP CON. PORT:2200
NETWORK >3.1  IP        :192.168.020.070
                        3.2  GATEWAY :192.168.020.001
NETWORK 3.11 WAN IP    :192.168.020.082
                        >3.12 BACK
NETWORK 3.11 WAN IP    :192.168.020.082
                        >3.12 BACK  QUIT *SAVE & QUIT*
  
```

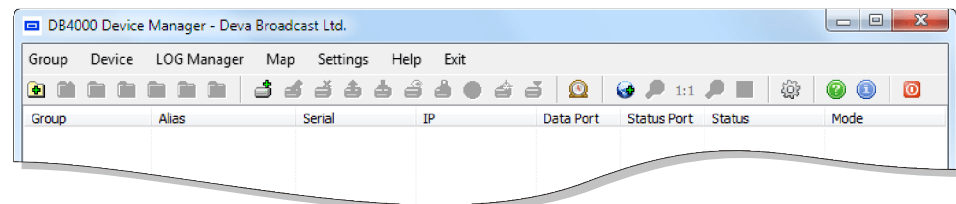
**STEP 6****Device Manager Software Installation**

- Use the Installation file which can be found on the supplied CD or downloaded from [www.devabroadcast.com/downloads](http://www.devabroadcast.com/downloads);
- Double click on the installation file to launch the Wizard, then follow the instructions.



After the installation process is completed a shortcut of the Software will appear on the desktop of your PC.

Double click on the shortcut to enter the Software. This will open the main application window. Most of the functions will be disabled, because there will be no devices listed in the Device Manager.



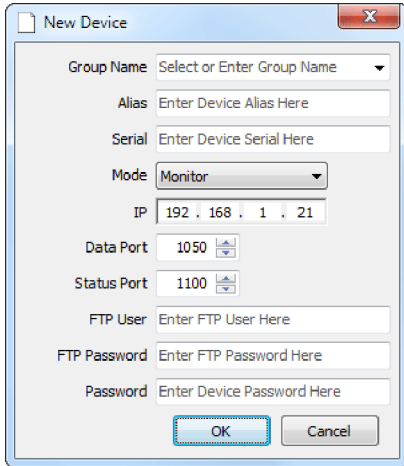
## STEP 7

## Defining a New Device

Follow these steps in order to define a new device:

- press the **"New Device Button"**  ;
- or select **"New Device"** from **Device Menu**.

A dialog box requiring obligatory information about the device will appear:



The "New Device" dialog box contains the following fields and controls:

- Group Name: Select or Enter Group Name (dropdown menu)
- Alias: Enter Device Alias Here (text input)
- Serial: Enter Device Serial Here (text input)
- Mode: Monitor (dropdown menu)
- IP: 192 . 168 . 1 . 21 (text input)
- Data Port: 1050 (spin box)
- Status Port: 1100 (spin box)
- FTP User: Enter FTP User Here (text input)
- FTP Password: Enter FTP Password Here (text input)
- Password: Enter Device Password Here (text input)
- OK and Cancel buttons at the bottom.

- **Group Name** is used for easier recognition of the device location (site, town, country, etc.);
- **Alias** is user-defined name for each device and along with *Group Name* makes the devices unique and easy to identify;
- **Serial Number** is the factory number of the device. It is a prerequisite for further device operations (**Step 2.1**);
- **Mode** defines the software behavior but it is uninfluential on DB4000 functions;
- **IP Address** Must be configured and taken from the Device (**Step 2.2**);
- **Data Port** is the main communication port used by the software (**Step 2.3**);
- **Status Port** is for the status query (**Step 2.3**);
- **FTP User** and **FTP Password** are for FTP access only. Default values are: user - *admin*, pass - *deva*;
- **Password** is to protect from unauthorized access. Default password: *1234*;


Fill in the needed information and press "OK".

Immediately after the data is confirmed, the software will try to establish connection with the specified IP and Status Port to verify the Device. If the connection is successful, the Device will be added promptly, otherwise software will ask for further actions.

## STEP 8

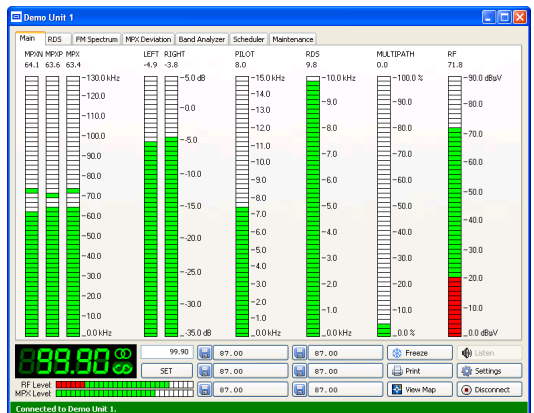
## View Device

In order to establish connection with the device follow these steps:

- Press **"View Device Button"**  or select **"View Device"** from **Device Menu**;
- Device Control Window will appear;
- Press the **"Connect"** button.

Each device has its own Control Window, which displays specific functions and readings.

When the device is not connected most of the functions and buttons are disabled, otherwise the Control Window looks like this:



*Please refer to the User manual for detailed information on how to configure and explore your device.*