

Quick User Guide

DB8008

Digital Silence Monitor with MP3 and IP Audio Backup Players

→ BEFORE YOU USE THIS PRODUCT ←

In order to be able to enjoy all the benefits of owning your new DEVA product, please verify first that the latest software and firmware release were installed.

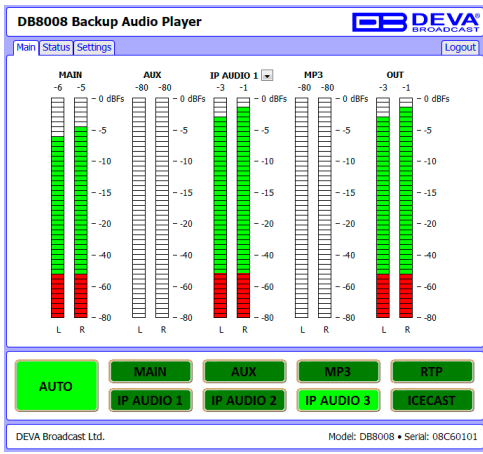
Visit www.devabroadcast.com/downloads for the most recent software and firmware downloads, prior the installation.



- To access the device open a new Explorer bar and click on **Network**. If you have successfully enabled the network discovery option, the device will be displayed. Double click on **DB8008** will open a new WEB browser window acquiring username and password. Default values are username: *user* and password: *pass*.

NOTE: If you have already enabled this function on your computer just open a new Explorer bar and click on **Network**. The device must be displayed. If not follow the instructions from Step 2.2.

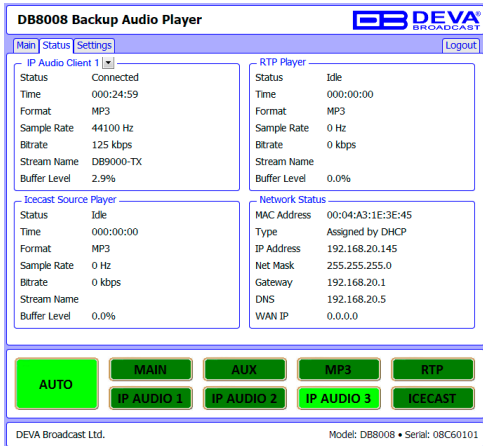
STEP 3 Main Window



The Main Screen contains information about the Source Levels. You can easily select the preferred audio source by using the source selection buttons.

By selecting the interactive “AUTO” button DB8008 will automatically select audio source in accordance with the “Audio Backup Settings”.

STEP 4 Status Window



The STATUS page contains information regarding the current Network and IP Audio status of the digital silence monitor.

In the section Network Status you can see the MAC address and current IP address of the device, Network mask and Gateway and the method in which they are assigned. Here you can also see the DNS server.

Section IP Audio Client contains information on the available three audio sources, including: Status (Connected or Idle), Connection time, stream parameters and name. The drop-down menu allows easy status monitoring of the audio sources.

STEP 5**Audio Settings Section**

DB8008 has one main and three backup audio sources. If the audio signal of the main source disappears the device will switch to the first available backup source.

When the main audio signal is recovered DB8008 will automatically switch back to it. Depending on your needs the priority of the connections should be specified.

By default the Main Input is specified as Primary Source. The Audio Backup sources are assigned as follows: Aux Input, IP Audio Player and MP3 Player. The priority of the sources can be changed.

The Main Audio Input can be chosen from among AES/EBU, Analog, S/PDIF or Optical input.

Depending on your needs you can choose between two types of Audio Output - professional and consumer.

NOTE: Please have in mind that only 3 of the 5 sources can be IP Audio, Icecast, RTP or MP3 player.

IMPORTANT NOTE: In case of power failure, the MAIN Audio inputs will switch directly to the Audio outputs. Once the power is restored, the DB8008 will resume its proper operation.

STEP 6**IP Stream Settings Section**
IP Audio Player

DB8008 has one main URL and two alternative Stream Audio Sources URL2, URL3. Switching between streams is immediate on audio loss. When current Stream is URL2 or URL3 and connection to URL1 is restored there will be an instantaneous switch back to URL1.

If the server does NOT use Port 80 you should enter URL and Port of the Encoder. For example 192.165.1.21:2100.

RTP Audio Player

Choose a port and decoder.

Icecast Audio Player

Choose a port and decoder. The username and password are used to secure the connection. Make sure to enter the same on both sides.

NOTE: The selected players' decoders must match the settings of the encoder devices on the other side of the connection.

Please refer to the User manual for detailed information on how to configure and explore your device.